



Hello, Junior Historians! Ready to go exploring at the Taber Museum? Here are four photographs of objects in the Museum. If you print this form out and bring it to the Museum, ***we will let you in for free!*** You must be accompanied by at least one adult, who will be asked to pay regular admission. At the Museum, identify the items, turn in the paper by September 30, and ***you could win \$10*** to use for ***anything*** in the Museum Store!

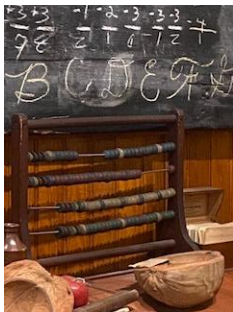
1



These items were used in what profession?

- a.) Surveying
- b.) Farming
- c.) Lumbering
- d.) Mill work

2



An early math tool, used before calculators and found frequently in early frontier schools, was called the:

- a.) Counter
- b.) Tracker
- c.) Abacus
- d.) Slide rule

3



These cast iron objects were used for what purpose?

- a.) Candle molds
- b.) Rigging on a ship
- c.) Marking the streets of Williamsport
- d.) Branding logs

4



This early tool was important because it was used for sharpening knife blades. It was called a:

- a.) Whetstone
- b.) Blade Runner
- c.) Cutty Q
- d.) Whirling Wheel

****Enter your contact information below so that we may notify you if you win!****

Name: _____ Phone/email: _____